



RECP #: 752691

RECORDED 5/8/2019 AT 1:12 PM BK# 2620 PG# 1733
Debra K. Lee, CLERK OF LARAMIE COUNTY, WY PAGE 1 OF 1

STATE OF WYOMING CORNER RECORD

(In compliance with the CORNER PERPETUATION AND FILING ACT, Wyoming Statutes, 1997 Section 33-29-140, et. seq., and the Rules and Regulations of the Board of Registrations for Professional Engineers and Professional Land Surveyors)

NORTHEAST CORNER SECTION 12, T. 18 N., R. 62 W., 6TH P.M., LARAMIE COUNTY, WYOMING

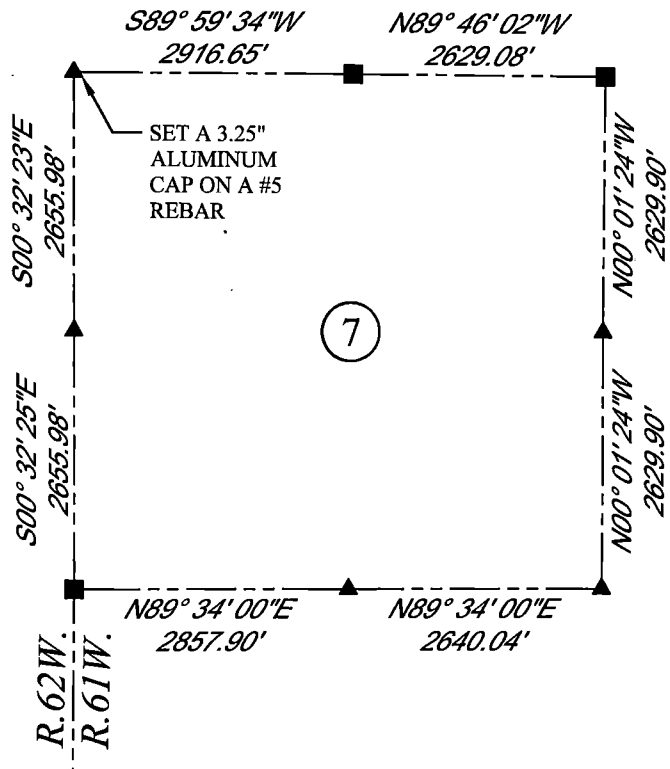
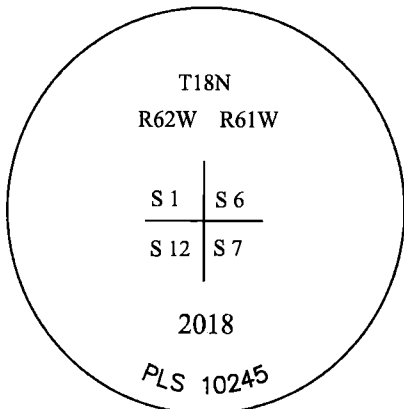
GLO: SET A LIMESTONE 16X12X8. 11" DEEP WITH 5 MARKS ON THE SOUTH AND ONE ON THE NORTH SIDE FOR CORNER TO SECTIONS 1, 6, 7, AND 12.

FOUND: NOTHING.

SET: 3.25" ALUMINUM CAP ON #5 REBAR, 16" BELOW SURFACE. POSITION RE-ESTABLISHED BY SINGLE PROPORTION.



SCALE: NONE
NORTH DETERMINED BY
G.P.S OBSERVATIONS



LEGEND:

- FOUND BLM CAP
- FOUND USFS CAP
- FOUND STONE
- FOUND PRIVATE MONUMENT
- ◆ CALCULATED POSITION
- ▲ SET MONUMENT (LS10245)
- SECTION LINE

DATE OF FIELD WORK: 09/26/2018 OFFICE REFERENCE: MERIDEN

CROSS INDEX DIAGRAM

1	2	3	4	5	6	7	8	9	10	11	12	13	14	15	16	17	18	19	20	21	22	23	24	25	
A																									A
B																									B
C	6		5		4		3		2		1														C
D																									D
E																									E
F																									F
G	7		8		9		10		11		12														G
H																									H
J																									J
K																									K
L	18		17		16		15		14		13														L
M																									M
N																									N
O																									O
P	19		20		21		22		23		24														P
Q																									Q
R																									R
S																									S
T	30		29		28		27		26		25														T
U																									U
V																									V
W																									W
X																									X
Y																									Y
Z	31		32		33		34		35		36														Z
	1	2	3	4	5	6	7	8	9	10	11	12	13	14	15	16	17	18	19	20	21	22	23	24	25

WOOD
2615 AVIATION DRIVE
SHERIDAN, WY 82801
PH: 307-675-6400

THIS CORNER RECORD WAS
PREPARED BY ME OR UNDER
MY DIRECTION AND
SUPERVISION,
SEAL AND SIGNATURE

wood.

